

Side Drum

THE RED CLYDESIDER

Chris Brown

$\text{♩} = 120$

Musical score for "The Swan" by Charles Ives, featuring a piano part. The score is written in 2/4 time and includes various dynamics and articulations.

Measure 1: *ff* (fortissimo)

Measure 7: *pp* (pianissimo)

Measure 13: *ff* (fortissimo)

Measure 20: *pp* (pianissimo)

Measure 26: *ff* (fortissimo)

Measure 33: *f* (forte)

Measure 42: *ff* (fortissimo)

Measure 51: *ff* (fortissimo)

Measure 59: *ff* (fortissimo)

Measure 65: *ff* (fortissimo)

Measure 72: *pp* (pianissimo)

Measure 79: *ff* (fortissimo)

The score includes various musical notations such as slurs, ties, and dynamic markings (*ff*, *pp*, *f*).

78



85



94 Fine



102



D

111



120



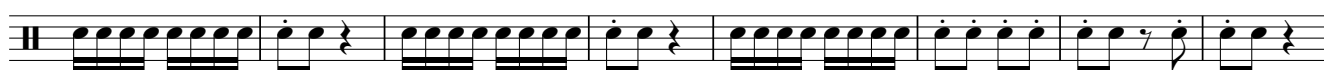
129



137



145 E



153



157

D.C. al Fine

