

Solo Horn

Steppe Dance

Chris Brown

$\text{♩} = 74$

1

pp *p*

5

4

11 $\text{♩} = 80$ **A**

p

15

B

19

p

23

27

30 **C**

mf

38 **D**

f

42 **To Coda**

2

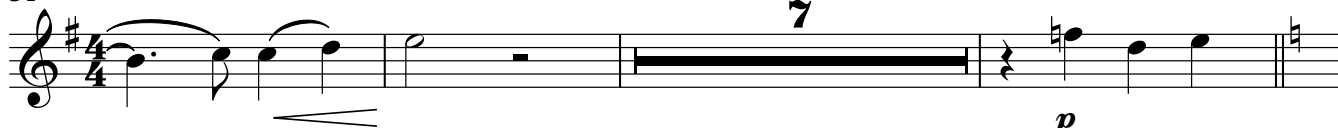
E Solo Horn

46

♩ = 80



51



accel.

♩ = 80

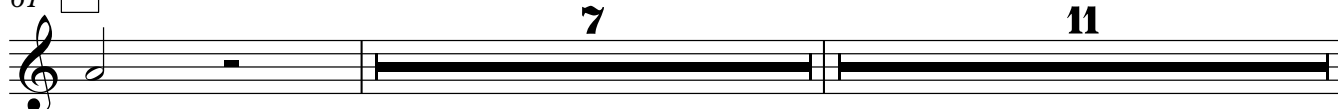
p

accel.

61

F**G**

♩ = 156



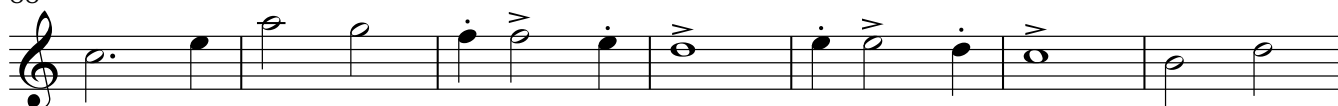
80

H

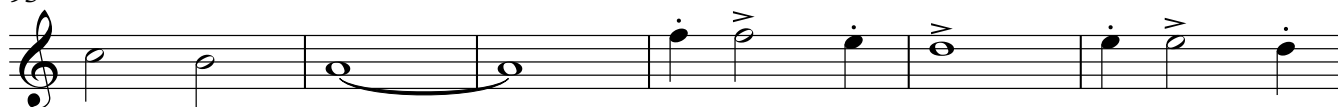
♩ = 240



88



95



101

D.S. al Coda

106 **⊕ CODA**