

SIR PATRICK SPENS

Timpani

F, C Eb

♩ = 60

p < *ff* *f* < *ff*

20 ♩ = ♩

A 13 7

mf

B 8 **C** ♩ = 60 5

mf *mf*

59 ♩ = ♩

5 1 1 2

D 18 **Piu Mosso** ♩ = 110 5 1 5

97 ♩ = 60 1 6 1 8 2

E Sopranos 16ve 4 rall. 2

say na sae, my mas - ter dear, For I

123 ♩ = 48 1 2 2

pp *p*

132 1

140 ♩ = 60 CHANGE F C and Eb TO G A and D 9

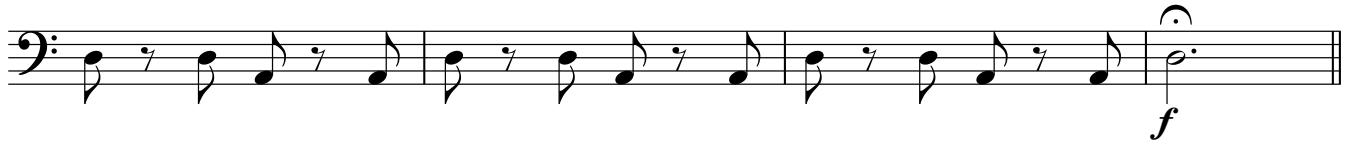
Timpani

2

149



153



157 ♩. = 60

F

♩. = 48

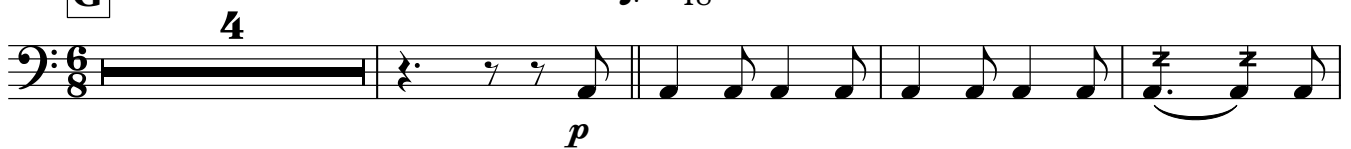


166



G

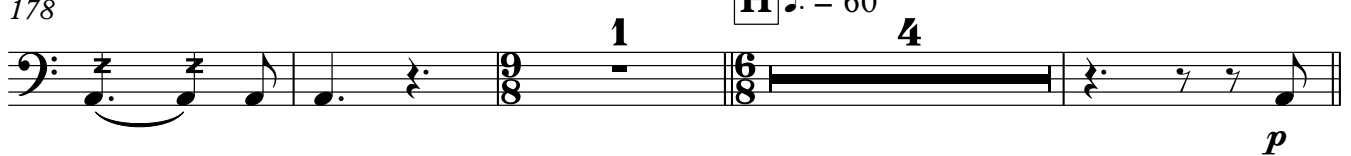
♩. = 48



178

H

♩. = 60

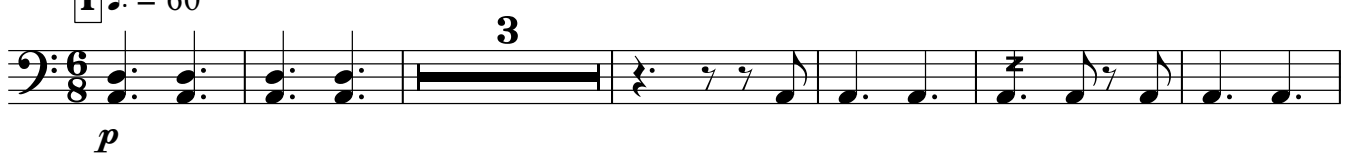


186 ♩. = 42

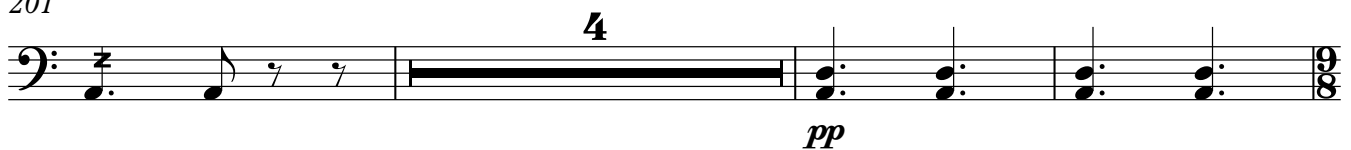


I

♩. = 60



201



208

rall.

♩. = 42



THE TWA CORBIES

Timpani

$\text{♩} = 144$

12 **3**

mp

J **8**

K **8**

L **M** **12** *f*

60

N $\text{♩} = 160$ **7** *rit.* **1** $\text{♩} = 144$ **9**

O **2** *mp*

90

mf *ff* *mf*

96

2 **4** *ff* *mf*

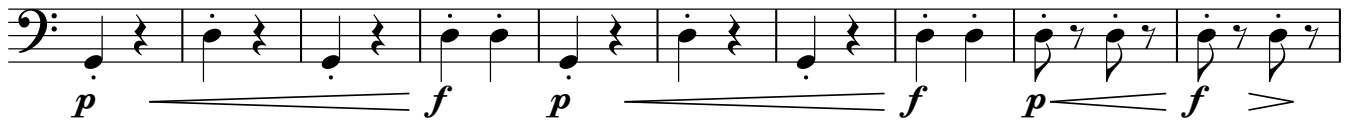
104 $\text{♩} = 180$

4

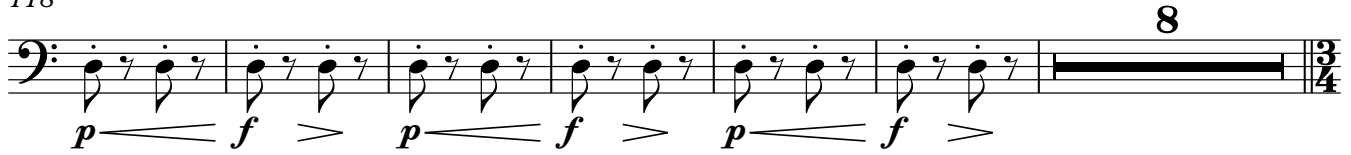
Timpani

4

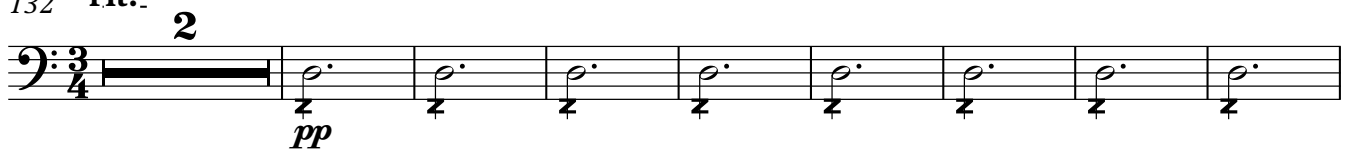
P



118



132 rit..



Q



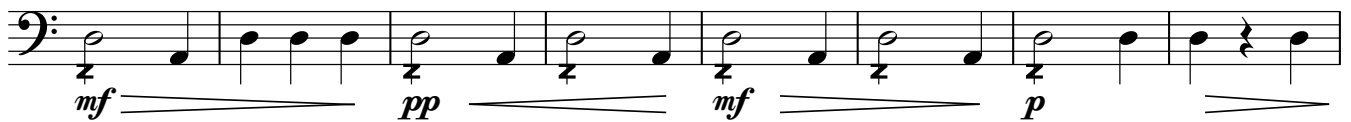
151



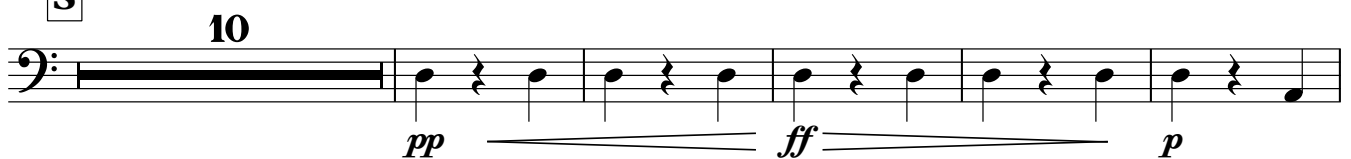
R



173



S



196



THE WIFE OF USHER'S WELL

♩. = 72

17 **T** **20** Cue: Solo Cts

mf *mp*

41

♩. = 72 **U**

3 **1**

ppp < > <

52 **V** **7**

p *mp*

64

CHANGE
D to C

3

p *ppp*

73 accel. ♩. = 60 **W** **2** **4** **16**

X **25** **1** **19**

♩. = 66

2 **4** **16**

141 **19** **5** **1**

♩. = 72

19 **5** **1**

Y **8** **18**

♩. = 96

8 **18**

Timpani

6

192 **12** Sopranos *f*

we maun bide."

210 *p* **2** *ff* **1**

218 *p* *pp*

Z $\text{♩} = 54$ **20** Sopranos **4**

Fare ye weel, fare ye weel,

252 *mf* **1**

258 *mf* *p*