

# Tequila Sunrise

Chris Brown

$$J = 96$$

ff mf

8

ff

gliss.

13

mf f

17

mf f

21

A 8

mf f

32

mf mf

37

B

42

8 f

55

To Coda ☺

60

C

f mf

66

1

## Bass Trombone

71



75



84



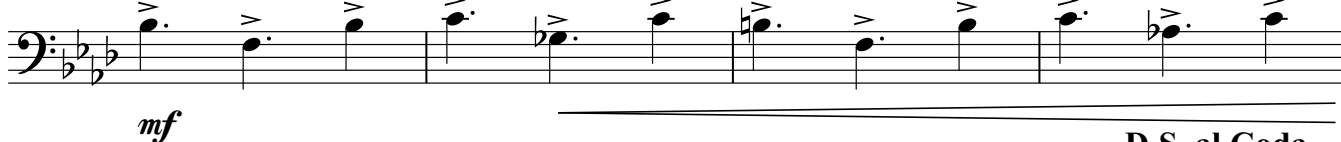
89



93



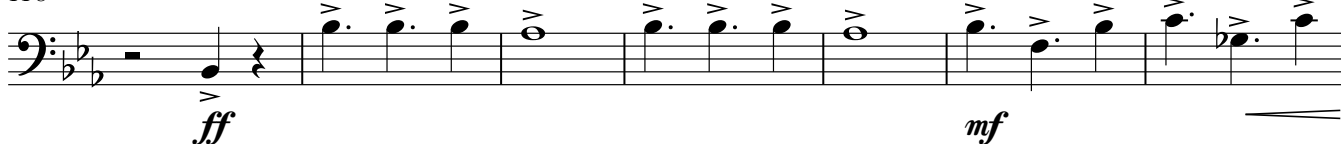
110



114



D.S. al Coda

118  $\oplus$  CODA

125



129

