

THE GOVAN STONES

Chris Brown

$\text{♩} = 72$

8

A *l.v.* *ff* *mp* *ff* *mf*

18 *mf* *mf* *mf* *< f*

B *f* *f* *mf* *< f* *f*

To Cym.
To Tri.

C *l.v.* *ff* *2* **6**

46 $\text{♩} = 80$ **D** **6** **17** Triangle *mf*

E

75 Cymbals **5**

83 1. **9** 2. **4** **6** **4**

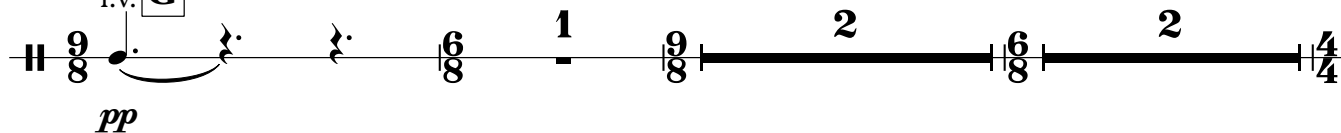
F $\text{♩} = 72$ **4** **9**

2

♩. = 54

Suspended Cymbals, Triangle

l.v.

G

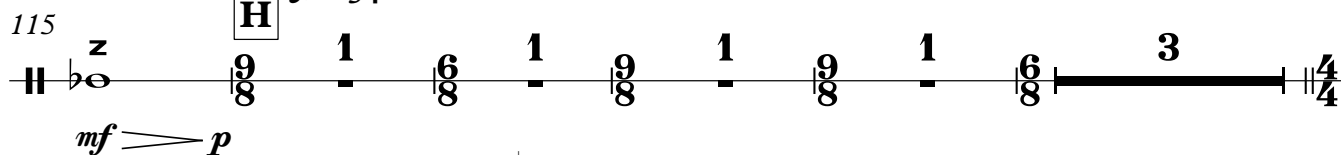
112 ♩. = 72



115

H

♩. = 54

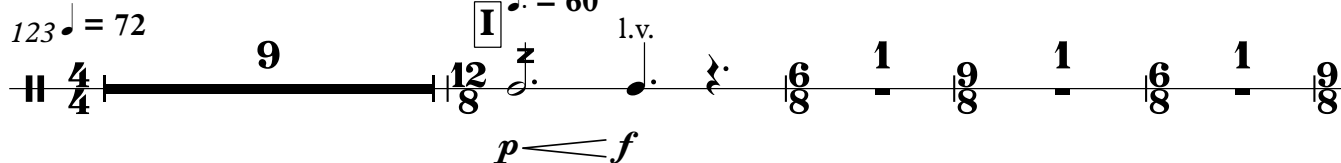


123 ♩. = 72

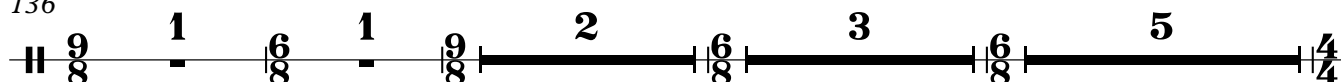
I

♩. = 60

l.v.



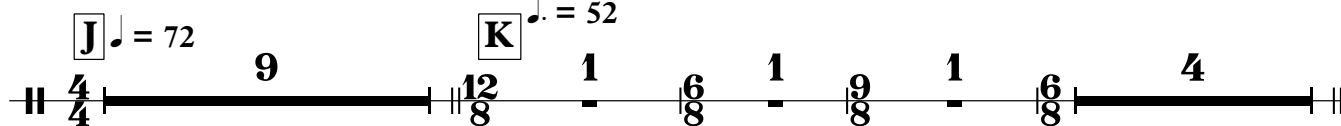
136

**J**

♩. = 72

K

♩. = 52

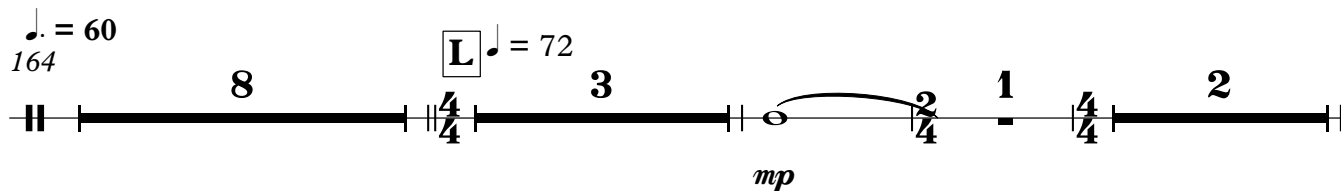


♩. = 60

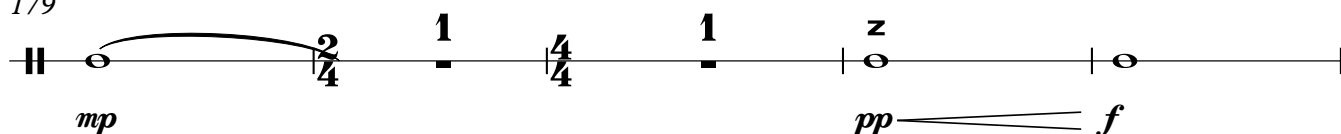
164

L

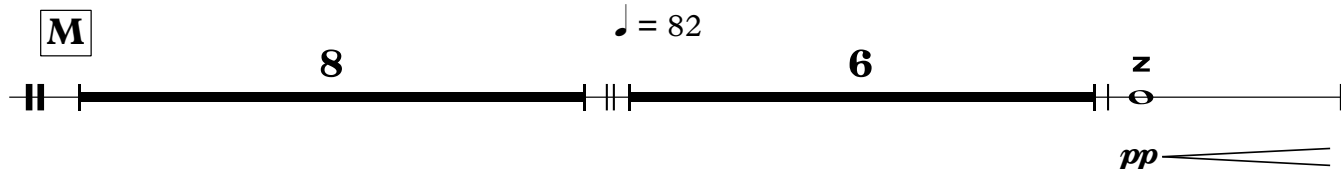
♩. = 72



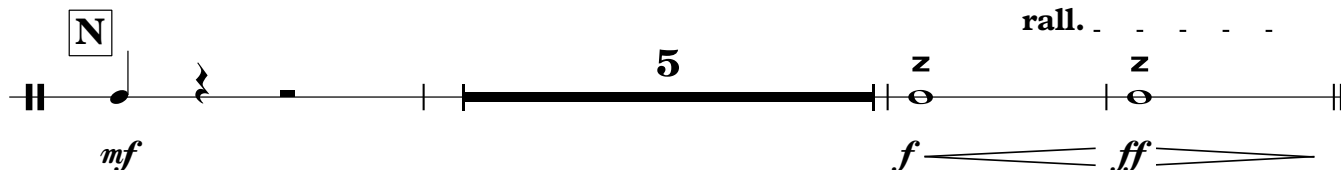
179

**M**

♩. = 82

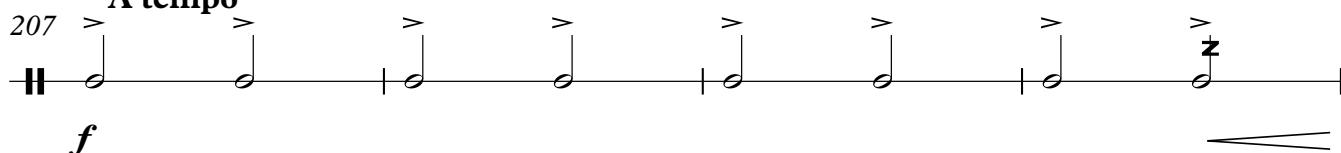
**N**

rall.



207

A tempo



3

The image displays three staves of musical notation for 'The Swan' by Camille Saint-Saëns. The notation includes various musical symbols such as notes, rests, bar lines, and dynamic markings.

- Staff 1 (Mezzo-soprano):** Starts with a half note G4, followed by a quarter rest, then a half note A4. Dynamics include *ff* = 60 and *ff*. Tempo markings include *rall.* and *p* (piano).
- Staff 2 (Soprano):** Starts with a half note G4, followed by a quarter rest, then a half note A4. Dynamics include *ff* and *p*. Tempo markings include *rall.* and *A tempo*.
- Staff 3 (Alto):** Starts with a half note G4, followed by a quarter rest, then a half note A4. Dynamics include *ff* and *f*. Tempo markings include *rall.* and *A tempo*.